



### Composition

Aramid Fibre, Mineral Fibres, Inorganic Fillers And HNBR Elastomer.  
Optional Steel Wire Mesh Insert On Request.



### Recommended Applications/ Industries

Excellent Thermal, Chemical And Mechanical Property Gasketing Material Suitable For Petrochemicals, Steam, Gas, Power Generating Equipments, Heating Systems Shipbuilding, Dilute Acids And Alkalies. High Service Conditions.

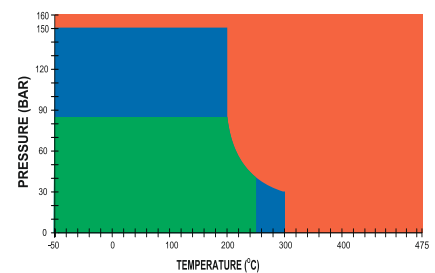


### AVAILABLE SIZES

Standard Sheet Size (mm)	1600x4500/1500x6000/1500x1600/ 1500x1500/1500 x 2000 / 1500 x 3000/ 2000 x 6000/3000 x 3000		
Thickness (mm)	0.40 to 6.00 for Non Metallic & 0.50 to 6.00 for Metallic		
Thickness Tolerances (mm)	Upto & including 0.50 = ± 0.05		
	Over 0.50, Upto & including 1.00 = ± 0.10		
	Over 1, Upto & including 2.00 = ± 0.15		
	Over 2.00, = ± 0.20		
Gasket Factors	Thickness (mm)	"M" Factor	"Y" Factor (N/mm²)
	0.80	3.50	44.80
	1.60	2.75	25.50
	3.20	2.00	11.00

#### Note:

- All colours are available with antistick coating.
- All metallic insert sheets are available with graphite finish.
- Metallic sheets are available in GI / SS mesh as required.



**P- T DIAGRAM** EN 1514-1, Type IBC, PN 40, DIN 28091-2/3.8, 2 mm

- General suitability** - Under common installation practices and chemical compatibility.
- Conditional suitability** - Appropriate measures ensure maximum performance for joint design and gasket installation. Technical consultation is recommended.
- Limited suitability** - Technical consultation is mandatory.

P-T diagrams indicate the permissible combination of internal pressure and service temperature which can be applied simultaneously for a given gasket depending on its material type, thickness, size and tightness class. Given the variety of gasket applications and service conditions, these values should only be regarded as guidance for the proper gasket assembly. In general, thinner gaskets exhibit better P-T properties.

### TECHNICAL INFORMATION

Compliance	BS 7531 Grade X
Category	Non Asbestos
Line Callout Number	ASTM104F711999A9E99L157M9
Colour	Yellow
Style	Non Metallic
	Metallic

Parameters	Standard	Unit	Value	
			Non Metallic	Metallic
Density	DIN 28090-2	gms/cc	1.65-2.00	1.65-2.00
Tensile Strength	ASTM F 152	Mpa	10.0-14.0	14.0-17.0
Compressibility	ASTM-F 36 J	%	≥ 10	≥ 10
Recovery	ASTM-F 36 J	%	≥ 50	≥ 50
Ignition Loss	ASTM-F 495-99a	%	≤ 35	≤ 35
Gas Permeability (Sealability against nitrogen)	BS 7531	ml/min.	≤ 1.00	≤ 1.00
Residual Stress	BS 7531 DIN 52913	Mpa	~25	~25
Flexibility @RT (Cracking, delaminating or distress)	BS 7531	---	OK	OK
Oil Absorption 5 H @ 150°C (Thickness/Mass)	BS 7531	%	≤ 7/≤ 8	≤ 5/≤ 5
Fuel B Absorption 5 H @ RT (Thickness/Mass)	ASTM F 146	%	≤ 7/28	≤ 6/≤ 6
Water Absorption 5 H @ 100°C (Thickness)	BS 7531	%	≤ 5	≤ 5
Short Term Temperature	-----	°C	450	475
Continuous Service Temperature	-----	°C	300	300
Max. Continue Temperature with steam	-----	°C	250	250
Pressure	-----	bar	150	160

For detailed selection criteria, technical information, installation guideline and a complete listing of local sales offices please visit [www.spitmaan.com](http://www.spitmaan.com)

## CHAMPION JOINTINGS PVT LTD.

15, Parsi Panchayat Road, Andheri East, Mumbai 400069 INDIA.

+91 22 40888000

CJPL@spitmaan.com

[www.spitmaan.com](http://www.spitmaan.com)