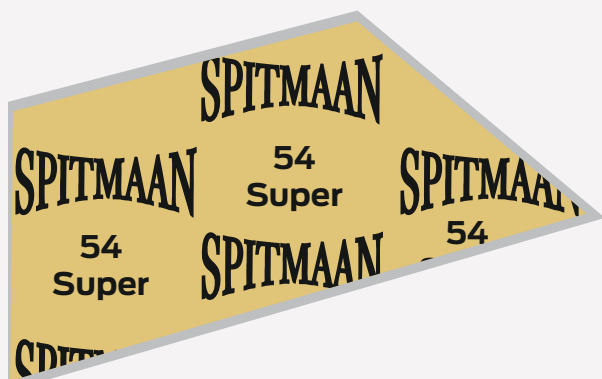




SINCE 1968

TOUGH  
TO BEAT

# Style 54 Super



## TECHNICAL INFORMATION

Compliance	IS 2712 Grade W/1	
Category	Asbestos	
Line Callout Number	ASTMF104F112009A9BOE00M9T5	
Colour	Non Metallic	Yellow-Grey/Black Graphited
	Metallic	With special metallic reinforcement To enhance



## Suitable Industries/ Properties

Primarily a Super Heated Steam Jointing popularly used in Marine Engines, Electricity Generating Sets, IC Engines, Compressors & Chemical Plants.

Parameters	Standard	Unit	Value	
			Non Metallic	Metallic
Density	IS 2712	g/cc	1.80-2.20	1.85-2.40
Tensile Strength	IS 2712	Kg/cm <sup>2</sup>	≥265	≥ 280
Compressibility	IS 2712	%	7.5-11	7.5-11
Recovery	IS 2712	%	≥ 50	≥ 50
Ignition Loss	IS 2712	%	≤ 22	≤ 22
Stress Relaxation (Residual Stress)	IS 2712	N/mm <sup>2</sup>	28	30
Flexibility @RT(Cracking, delamination or distress)	IS 2712	—	OK	OK
Oil Absorption 5 H @ 150°C (Thickness/Mass)	IS 2712	%	.....	.....
Fuel B Absorption 22 H @ RT (Thickness/Mass)	IS 2712	%	.....	.....
Water Absorption 5 H @ 100°C (Thickness/Mass)	IS 2712	%	≤7	≤ 7
Recommended Maximum Temperature	--	°C	550	600
Recommended Maximum Pressure	—	Kg/cm <sup>2</sup>	150	160

### Note:

- All metallic insert sheets are available with graphite finish.



## Product Description

Excellent Grade of Chrysotile Asbestos Fibres & Fillers blended intimately with Heat Resistant Rubber Compounds under a Special process to ensure Maximum Stability to withstand High Pressures and Temperatures.



## Appropriate/Suitable Media

Saturated Steam, Oxygen, Petroleum Distillates, Hot Oils, Fuels, Hydrocarbons, Lyes etc. Motor Oil, Transmission and Hydraulic Fluids, Steam, Alkalies, Antifreeze & Refrigeration Oils. (High Service Conditions)

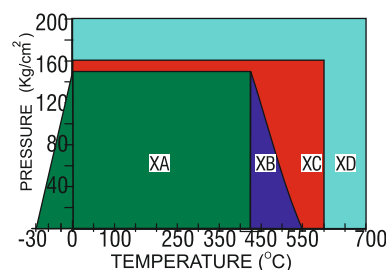


## AVAILABLE SIZES

Standard Sheet Size (mm)	1600/1500 x 1500 1600/1500 x 2000 1600/1500 x 3000 1600/1500 x 6000 1525 x 1650 1525 x 5000 2000 x 6000 2000 x 2000 3000 x 3000 1000 x 1000 2000 x 3000
Thickness (mm)	0.40 to 6.00 for Non Metallic & 0.50 to 6.00 for Metallic
Thickness Tolerances (mm)	Upto & including 0.50 = ± 0.05 Over 0.50, Upto & including 1.00 = ± 0.10 Over 1.00 Upto & including 2.00 = ± 0.15 Over 2.00 Upto & including 3.00 = ± 0.20 Over 3.00 Upto & including 4.00 = ± 0.30 Over 4.00 = ± 0.40

### TYPICAL VALUES FOR A THICKNESS OF 1.60 mm

Gasket Factors	Thickness (mm)	"M" Factor	"Y" Stress (Psi)
	0.80	3.50	6500
	1.60	2.75	3700
	3.20	2.00	1600



### PERFORMANCE CHART & RECOMMENDATION

Maximum Values of Temperature and Pressure should not be used simultaneously, they are given only as guidance. Maximum Temperature and Pressure depends not only on the type of gasket material but also on the application conditions such as thickness of material, nature of service medium, type of flange, surface stress etc.

- XA** General suitability using common installation practices under conditions of chemical compatibility
- XB** Maximum performance is ensured through appropriate measures for joint designs and gasket installations. Consultation is recommended.
- XC** Limited application area. Technical consultation is mandatory
- XD** Area not recommended

For detailed selection criteria, technical information, installation guideline and a complete listing of local sales offices please visit [www.spitmaan.com](http://www.spitmaan.com)

## CHAMPION JOINTINGS PVT LTD.

15, Parsi Panchayat Road, Andheri East, Mumbai 400069 INDIA.

+91 22 40888000

CJPL@spitmaan.com

[www.spitmaan.com](http://www.spitmaan.com)

The information in the catalogue is intended for use by persons possessing technical skills at their own discretion and risk. The company assumes no obligation or liability in connection with its use. All data in this catalogue is based on practical experience and is intended for information & guidelines.